



HILLMANN
CONSULTING

Your Property. Our Priority.

Environmental Health & Safety
Due Diligence & Remediation Management
Energy Consulting
Construction Services
In-House Lab Analysis

[Hillmann.com](https://www.hillmann.com)

© Hillmann Consulting, LLC. All Rights Reserved.



About Hillmann

Integrity is vital to our growth and longevity. It is the foundation our company was built on in 1985 and remains at the forefront of our business practices and relationships today. Our team excels at balancing science and business. We pride ourselves on being a true partner to our clients and understanding their projects holistically. We provide value by listening first, then seeking the most effective solutions that best serve our clients' needs. Our team is keenly driven to get the science and engineering correct and present it in the right context.

At Hillmann, we strive to make a better future for all the communities we touch.

THE HILLMANN FAMILY OF COMPANIES:

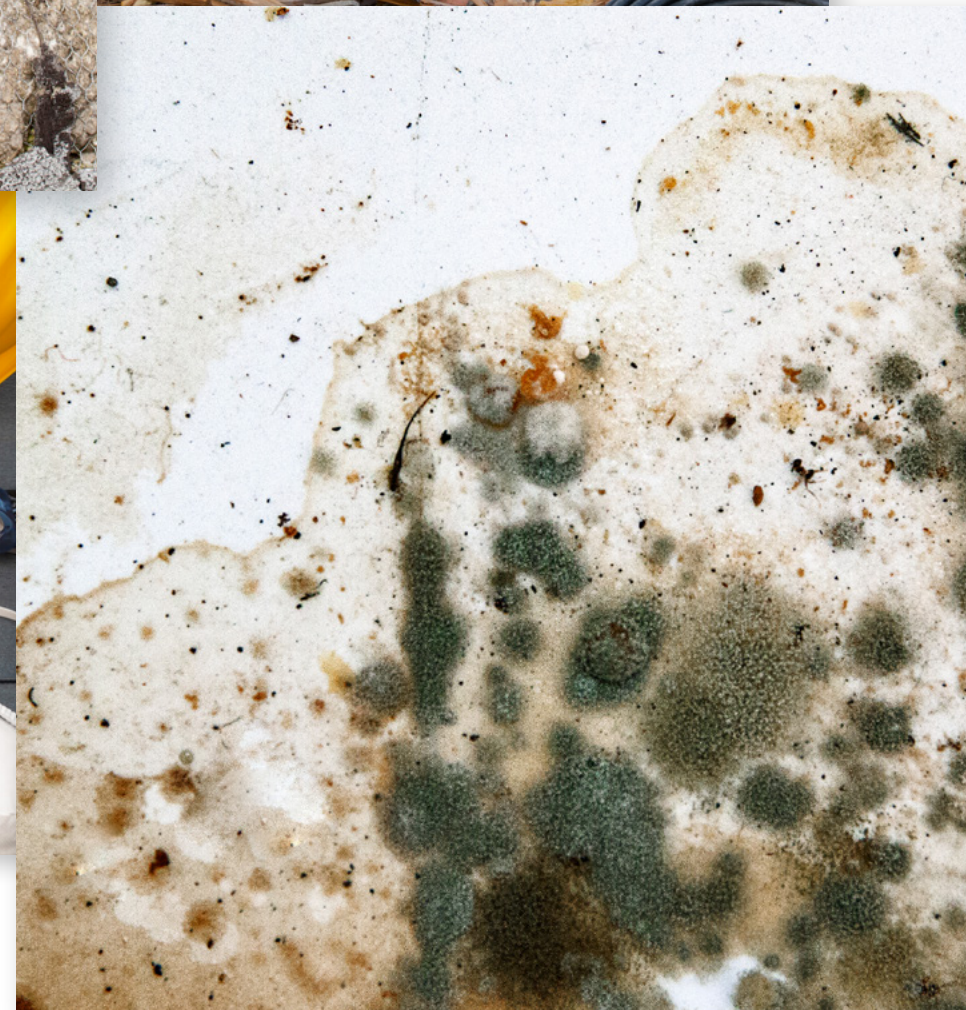


Environmental Health & Safety Services

Exemplary Building Sciences & Industrial Hygiene services focused on maintaining optimal indoor environments by recognizing and controlling health and safety hazards.

- *Asbestos Services*
- *Mold Services*
- *Lead Services*
- *Indoor Air Quality (IAQ)*
- *Community Right-to-Know (RTK) & GHS Safety Data Sheet Compliance*
- *Risk Management & Loss Control*
- *Training/Occupational Safety*
- *Disaster/Emergency Services*
- *Industrial Hygiene*

CONTACT US AT:
info@hillmann.com





Due Diligence & Remediation Management

Services designed to help mitigate potential environmental risk and liability.

- *Phase I & II Environmental Site Assessments (ESA)*
- *Environmental Assessment (HUD Part 50/58, CEQR/SEQR)*
- *Hazardous Materials (HAZMAT) Surveys*
- *Property Condition Assessment (PCA)*
- *Seismic Risk Assessment (PML)*
- *Groundwater Testing*
- *Soil Testing & Delineation*
- *Radon Testing Services*
- *Remediation Design & Management*
- *UST/AST Decommissioning & Compliance*

CONTACT US AT:
info@hillmann.com

Energy Consulting



Delivering expert Energy Consulting Services, optimizing sustainability and efficiency for all of your building and business needs.

- *Energy Audits & Consulting*
- *Commissioning (Cx) & Retro-commissioning (RCx)*
- *Measurement & Verification (M&V) Services*
- *Energy Management & Assessment Software*
- *Energy Ordinance Compliance*

CONTACT US AT:
info@hillmann.com



Construction Services

A comprehensive range of Construction Services tailored to our client's unique business and operational needs.

- **Construction Risk Management**
Loan Monitoring, Plan & Cost Review (PCR), Property Condition Assessment (PCA), Site Observation Report (SOR), and Zoning Reports
- **Construction Advisory**
Owner Advisory Services, Program Management, Cost Consultancy, Design Management, and Expediting Services
- **Construction Site Safety**
Onsite Site Safety Management, Construction Safety Audits, Site Specific Safety Plans (SSSP), and Health & Safety Plans (HASP)
- **Development Management**
Partnering with property owners, developers, and investors to devise and materialize real estate development strategies through our wholly owned subsidiary - Hillmann Development Advisors (HDA).

CONTACT US AT:
info@hillmann.com



In-House Lab Analysis

Hillmann Consulting maintains a fully accredited environmental laboratory that provides a range of analytical testing services supporting environmental investigations focused on asbestos, mold, nuisance dust, legionella, sewage, and total coliform/E.coli. Our lab is staffed by a multi-disciplined team of analysts, providing reliable analytical results for Hillmann clients, other environmental consultants, and home inspectors.

Our Environmental Health & Safety team has a direct line of communication with our lab analysts, allowing for a more collaborative approach to solving complex environmental issues. This provides added value and sets us apart from other consultants in the industry.

CONTACT US AT:
info@hillmann.com

